

Membership Pack

Information & Guide For Joining The Chamber

Tel. 01628 670 573

www.maidenhead.org.uk



Maidenhead and District Chamber of Commerce

"Creating a better place for business, shopping and leisure"

Chamber Facts

- The Chamber was founded in 1905
- In 1978 the Chamber started the annual Christmas lights display.
- Lobbying by the Chamber has led to many of the current developments including the Nicholson Centre, Pedestrianisation of the High Street and a Town Manager.
- We have over 400 members, made up of businesses in the local area.
- The Chamber is a consultative body for local development activities.



Welcome

The Chamber is here to promote the area as a good place for business, shopping, leisure, professional services and local traders.

We can also help you with the everyday challenges that you face, from growing your business, to keeping you up to date with local issues and development opportunities.

We are a non profit organisation funded entirely by members and volunteers, all who share our vision of improving the area. We welcome your support in joining and wish your business luck.

Eddie Pearce
Chamber President

Chamber Initiatives

- **To Attract more specialist shops** to the town, by working with local groups and commercial agents we aim to improve the shopping experience.
- **To Improve facilities & make the town centre a better place for families** and local residents, by working with the Maidenhead Town Partnership and Local Authorities.
- **Buying Local** - To encourage local residents and businesses to try a Local Chamber Member or Local business for goods or services.
- **Traffic & Parking** - to work with local authorities to improve flow of traffic and parking around town.
- **Maidenhead Summer** - To work with the Maidenhead Town Partnership and other local groups, to promote summer events that take place in Maidenhead, Cookham, Bourne End, Burnham, Taplow and surrounding areas.
- **Christmas Lights** - In association with the Maidenhead Advertiser to raise funds and organise the annual Christmas Lights for Maidenhead.
- **Local Partnerships** - We encourage Chamber members to increase partnerships with local charities and community groups.
- **Planning for the Olympics** - To ensure Maidenhead has an Olympic feel and help members benefit from contract opportunities and activities in the area.

Chamber Vision

To make Maidenhead and District a better place for shopping, leisure and business, for local residents, visitors and workers.

Why Join ?

- Help your business grow and develop
- Improve the local area and business economy
- Socialise and network with business professionals
- Keep up to date with developments and local issues

Membership Benefits

Business Support - The Chamber offers ongoing support and advice for members in many areas, including licensing, business planning, development, growth and marketing. In addition we are a consultative body to the Local Authority on issues that affect the town and local traders or businesses.

"The Guide" Directory Listing – Members receive a free listing which is a great way to promote your business to over 40,000 people.

Networking Events - Throughout the year the Chamber organises talks, presentations, networking and seminars with local business leaders, guest speakers and business entrepreneurs.

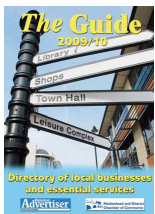
Marketing & Promotions – Members can advertise events or promotions or send out leaflets and email via the Chamber Post or Email Service.

Social Events – From summer barbecues, to the annual dinner dance, throughout the year we have a range of events, where you can relax and enjoy yourself with friends colleagues and other members.

Newsletter – The Chamber newsletter includes local business news information, events, promotions, training information, tips, advice and guidance on issues affecting the day to day running of a business.

Business to Business Trading – The Chamber encourages trading between members and to local businesses and residents. We promote this throughout the year and offer many ways for businesses to work together for local and national opportunities.

Corporate Membership of Bodyzone Gym at the Magnet



The Guide

Membership includes a free listing and discounted advertising in "The Guide", a publication in association with the Maidenhead Advertiser, distributed to almost 40,000 businesses & residents in the local area.

Annual Membership Fees

£20.00 Administration when you join (one off charge)

Annual Membership Fees

£40.00 Annual Fee (businesses employing less than 20)
£70.00 Annual Fee (businesses employing 20 to 50)
£95.00 Annual Fee (businesses employing 50+ people)

Incorporating: Maidenhead, Bourne End, Bray, Cookham, Burnham & Taplow



Frequently Asked Questions

Does my business have to be based in Maidenhead ?

In order to qualify for membership you must be located in OR provide goods or services in the District Area of: **Maidenhead, Bourne End, Bray, Cookham, Burnham or Taplow.**

Are there any commitments I have to make ?

All services are optional, the only commitment is the annual membership fee.

Do I have to attend any networking events ?

All networking or business events are optional, you are not obliged to attend them, but they are a good way to meet other local business professionals and promote your business.

When is The Guide Directory Published ?

The Guide is published in association with the Maidenhead Advertiser and is distributed to almost 40,000 businesses and residents in the area. The publication date is March every year. Exact dates and deadlines will vary. Contact us for details.

Do I have to recommend or buy services from other members ?

We provide a directory of local businesses to aid you, but you do not have to use them. Other members may have experience of the services offered, so it's worth checking with them for references.

Are you part of the Council ?

The Chamber is an independent not for profit organisation, made up of volunteers.

Can an individual join ?

Independent traders, consultants, professionals and home business owners are all welcome to join.

How many members does the Chamber have ?

The Chamber is made up of approximately 400 businesses in the area.

I have multiple businesses in the area, can I have one membership ?

Only one business can be used for correspondence or listing in the guide. If you wish to list multiple businesses in the guide, each business requires Chamber membership.

What types of businesses join ?

The Chamber membership is made up many businesses of different sizes, from small businesses, to major local employers. Approximately 70% are small businesses in the area.

Are you focused on the Town Centre Only ?

A majority of press coverage is related to the town, but the Chamber is responsible for Maidenhead District, which incorporates **Maidenhead, Bourne End, Bray, Cookham, Burnham & Taplow.**

To find out more about the Chamber you can attend one of our many Networking events, hosted throughout the year. You will be able to experience first hand, how the Chamber works and also talk to existing members for feedback.

Please visit our website www.maidenhead.org.uk to find out more or call 01628 670 573

Incorporating: Maidenhead, Bourne End, Bray, Cookham, Burnham & Taplow

Membership Application Form



Maidenhead and District
Chamber of Commerce

Application for membership

Tel. 01628 670 573

www.maidenhead.org.uk

"Creating a better place for business, shopping and leisure"

1. Contact details for all correspondence (BLOCK CAPITALS)

Full Business Name	
Number of staff	
Address	
Postcode	
Contact	
Telephone Number	
Mobile Number	
Fax Number	
Email Address	
Additional emails (add email addresses for any employees who wish to receive news and event updates. You can unsubscribe any time).	

Payment Details

We operate a Pro-Rata Fee. This is the amount you must pay now, based on the month that you join the Chamber.

Less than 20 employees	Pro Rata
Nov/Dec/Jan	£40.00
Feb/Mar/Apr	£30.00
May/June/Jul	£20.00
Aug/Sep/Oct	£10.00

20 to 50 employees	Pro Rata
Nov/Dec/Jan	£70.00
Feb/Mar/Apr	£52.50
May/June/Jul	£35.00
Aug/Sep/Oct	£17.50

More than 50 people	Pro Rata
Nov/Dec/Jan	£95.00
Feb/Mar/Apr	£71.25
May/June/Jul	£47.50
Aug/Sep/Oct	£23.75

Total To Pay Now	£UK
Pro Rata Fee	£
Admin Fee (one off)	£20.00
Optional Website Link	£10.00
3. Total Amount Due Now Please attach a cheque & post as below	£

2. Details For Publication in The Guide / Website (BLOCK CAPITALS)

Address (If different from above)	
Telephone Number	
Email Address	
Website	
Business Classification	
Business Description (20 words Attach additional sheet if required)	

Please send cheque payable to
**The Maidenhead & District
Chamber of Commerce**

29/31 Risborough Road
Maidenhead, Berkshire
SL6 7YT

The Chamber is a not for profit
organisation.
Prices correct at
time of publication

4. Please enrol me as a member of Maidenhead and District Chamber of Commerce, I enclose a cheque for £_____

5. Signed

6. Date